

Mongala Tax Management System Report

This report presents an in-depth analysis of tax-related metrics and key performance indicators (KPIs) specifically pertaining to Mongala Province in the Democratic Republic of the Congo (DRC). It encompasses critical insights into revenue generation, taxpayer behavior, and compliance trends across various sectors. By examining historical data and current fiscal patterns, the report identifies areas of strength and potential improvement within the province's tax infrastructure. Additionally, it highlights key drivers of tax performance, assesses the effectiveness of current tax policies, and provides actionable recommendations to support strategic planning, enhance transparency, and optimize revenue mobilization efforts at the provincial level.

Generated on: 7/11/2025 at 4:02:53 PM

Surface Totale

113 SqKm (Approx)

Total De La Parcelle

24.23k

Total Bâtiment

49.75k

Total Vérifié

72

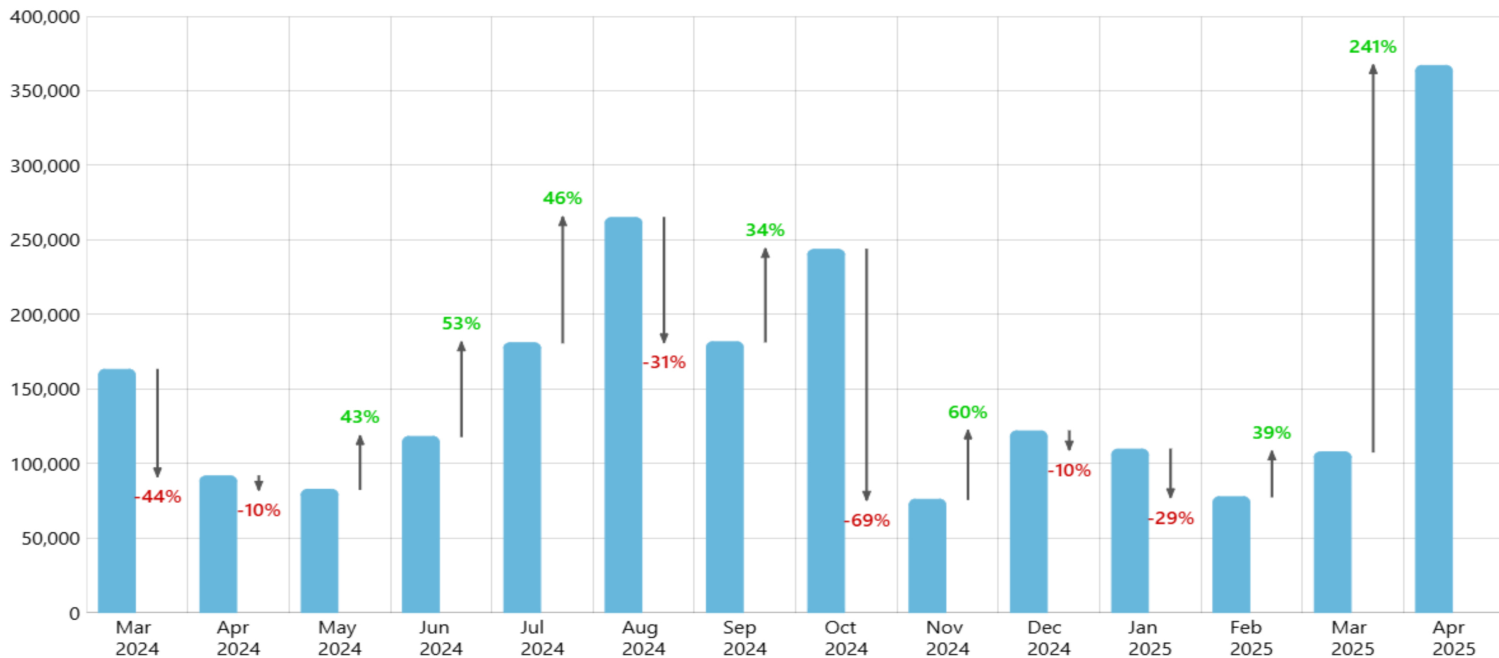
Domaine Montant

\$22,60,00,000.00

Montant Reçu

3.77M

Annual Collection Trends

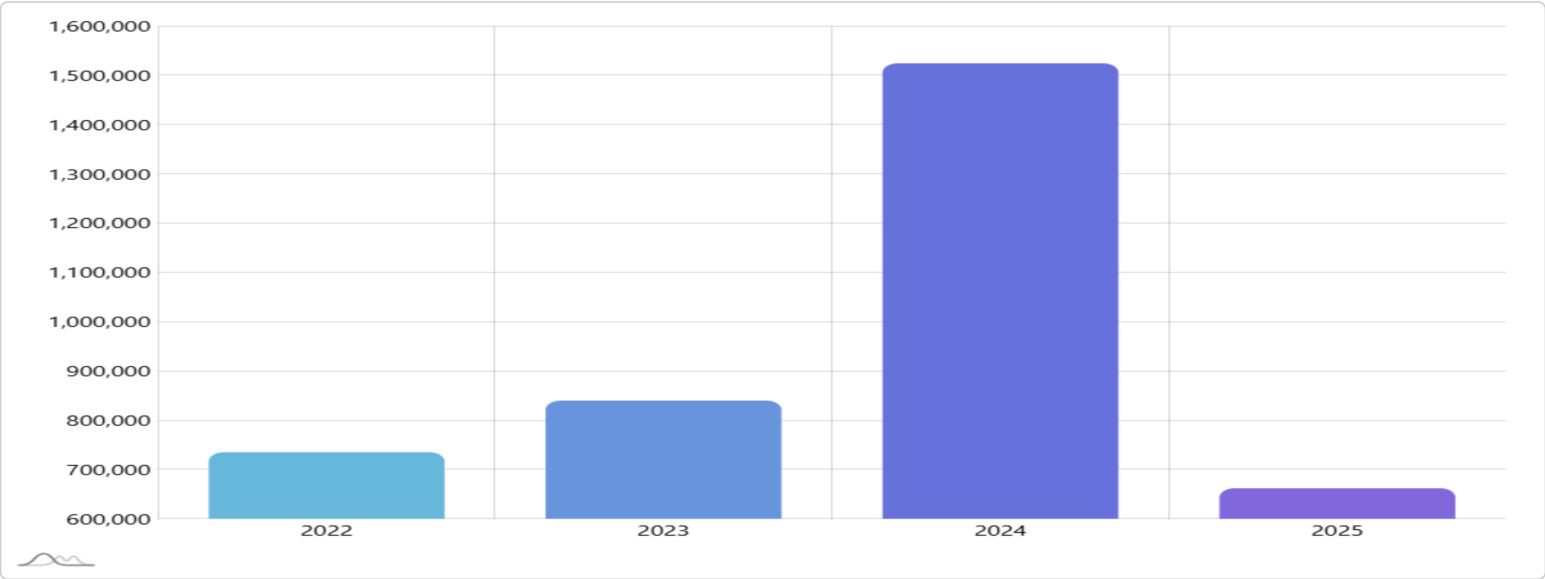


The Annual Collection Chart provides a comprehensive visualization of tax revenue collection patterns over time. This chart helps identify seasonal trends, growth patterns, and potential anomalies in tax collection performance. Key observations include:

- Monthly and quarterly collection patterns
- Year-over-year growth comparisons
- Seasonal fluctuations in revenue
- Impact of policy changes on collections

Revenue Analysis

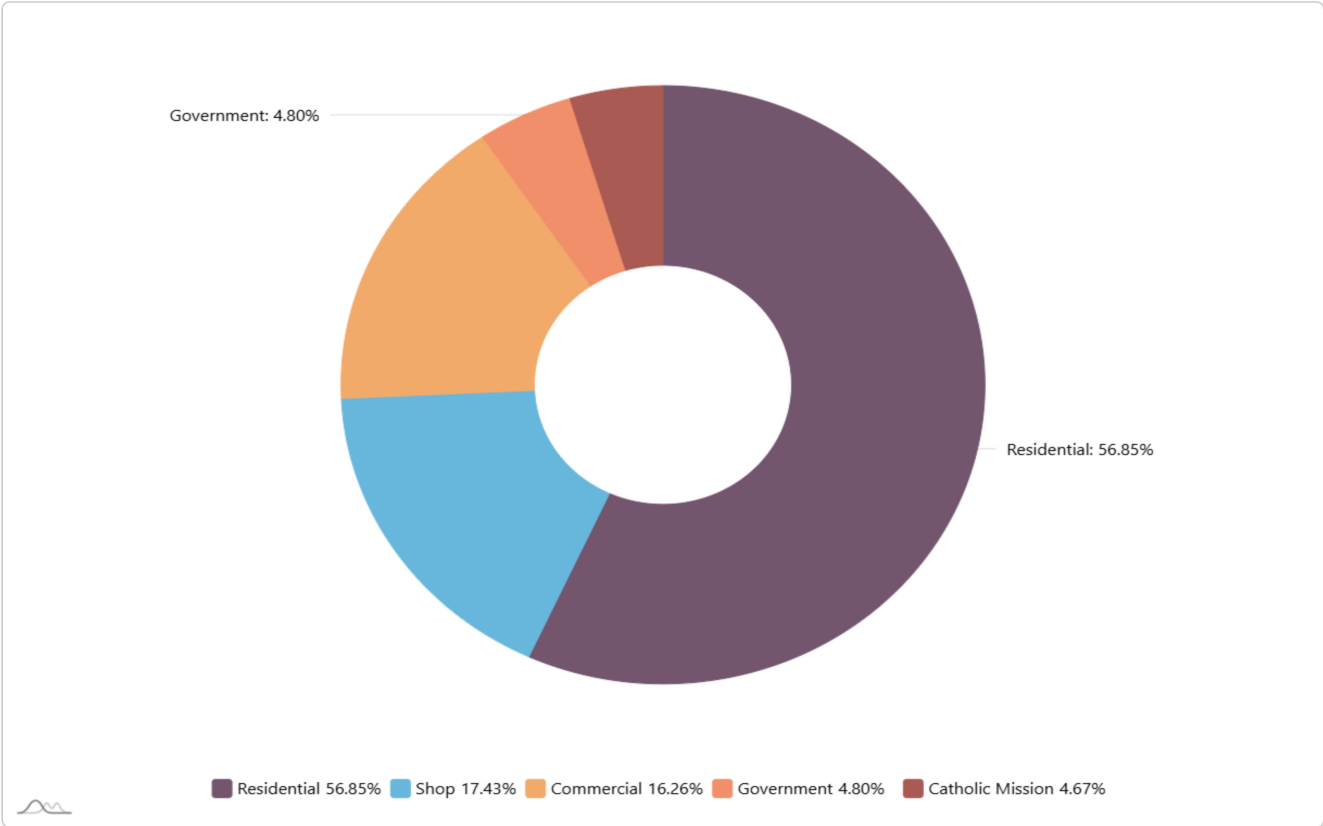
Annual Tax Collection Summary



The Annual Tax Collection Summary provides a high-level overview of revenue collection by fiscal year. This visualization helps identify:

- Year-over-year growth trends
- Total revenue collected per fiscal period
- Comparison between different years
- Long-term collection patterns

Building Category Breakdown



The Building Category Breakdown illustrates how tax revenue is distributed across different property types. Key insights include:

- Revenue contribution by property category
- Distribution of tax burden across sectors
- Identification of highest-revenue property types
- Potential areas for focused collection efforts

Top Tax-Paying Properties

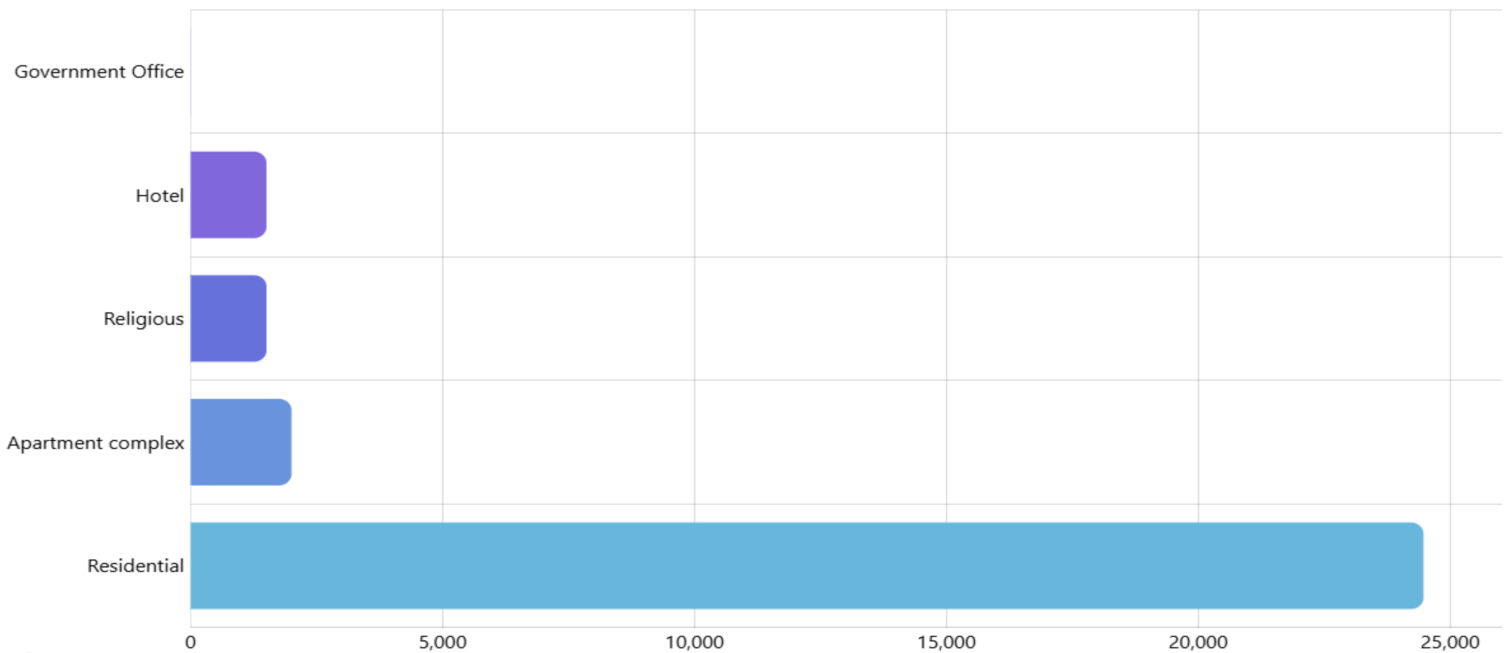


■ Educational 49.07% ■ Under Construction 23.76% ■ Commercial 21.59% ■ Government 5.58%

This visualization ranks the top revenue-generating properties based on total tax payments. The analysis reveals:

- The highest tax-paying properties in the region
- Relative contribution of top properties to total revenue
- Potential benchmarks for tax compliance
- Opportunities for targeted engagement with high-value taxpayers

Lowest Tax-Paying Properties



This chart identifies properties with the lowest tax payments, highlighting potential areas for:

- Improved compliance efforts
- Targeted taxpayer education
- Potential undervaluation issues
- Collection improvement opportunities